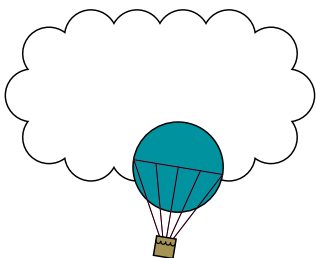


# Cambridge English Key *for Schools*

Brief exam guide



*The key to essential English*



**CAMBRIDGE ENGLISH**  
Language Assessment  
Part of the University of Cambridge

## The key to essential English

*Cambridge English: Key for Schools* is specifically designed to motivate school-aged learners. It shows that a student has mastered the basics in English.

## Prove that students have the skills to communicate

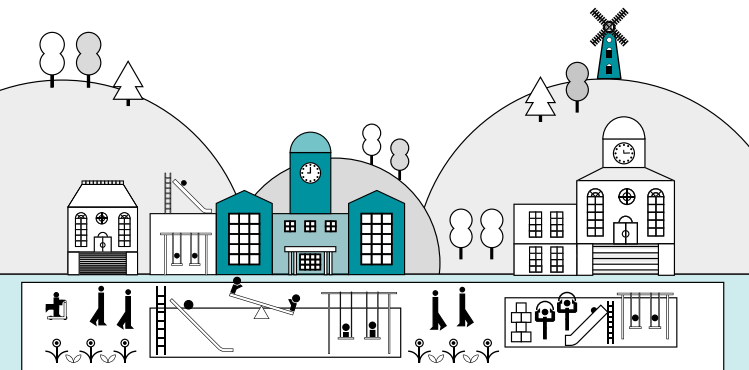
The exam shows that students can:

- **understand and use basic phrases and expressions**
- **introduce themselves** and answer basic questions about their personal details
- **interact with English speakers** who talk slowly and clearly
- **write short, simple notes.**

## An internationally accepted certificate

Students receive the same certificate as adults who take the *Cambridge English: Key* exam.

This certificate is accepted by thousands of leading businesses and educational institutions worldwide.



## What level is the exam?

The exam focuses on Level A2 of the Common European Framework of Reference for Languages (CEFR). It shows that a student can use everyday English at a basic level.

## What's in the exam?

The exam is designed to be fair to people of all nationalities and linguistic backgrounds, and is supported by a dedicated research programme.

It covers all four language skills (Reading, Writing, Listening and Speaking) and knowledge of grammar and vocabulary.

**Reading  
and Writing:**  
1 hour 10 minutes

Shows that a student can understand simple written information and write short messages related to personal information.

**Listening:**  
30 minutes

Shows that a student can understand key information in everyday conversations.

**Speaking:**  
8-10 minutes

Shows that a student can take part in a conversation. The test is taken face-to-face with one or two other candidates.

Your students' overall performance is calculated by averaging the scores they achieve in Reading and Writing, Listening and Speaking. The score for Reading and Writing is doubled in this calculation.

Download sample papers at  
[www.cambridgeenglish.org/keyforschools](http://www.cambridgeenglish.org/keyforschools)

Students can take the exam on paper or on computer.



[www.cambridgeenglish.org/  
keyforschools](http://www.cambridgeenglish.org/keyforschools)

Where could this exam take students in the future?



“When you learn a language it’s very important that it’s structured. The exams offer you a step-by-step approach.”

Patrick Fryzlewicz  
Cambridge English: Key certificate holder  
and trainee doctor

## The key to essential English

- Make learning English fun and motivating for school-aged learners.
- Help them develop real-life language skills.
- Measure students' progress using international standards.
- Help students access the best study, work and life opportunities.

Over

**20,000**

organisations worldwide trust

Cambridge English exams

## What's next?

### Step 1 - Contact your local exam centre

Your local centre can give you details of dates, costs, how to prepare and how to register for an exam.

Find your nearest centre at

**[www.cambridgeenglish.org/centresearch](http://www.cambridgeenglish.org/centresearch)**

### Step 2 - Get support

Find a wide range of support, including official Cambridge English preparation materials, at

**[www.cambridgeenglish.org/keyforschools](http://www.cambridgeenglish.org/keyforschools)**

© UCLES 2015 | CE/1007/5Y04



\*0008083425\*



**CAMBRIDGE ENGLISH**  
Language Assessment  
Part of the University of Cambridge

## Contact us

Cambridge English  
Language Assessment  
1 Hills Road  
Cambridge  
CB1 2EU  
United Kingdom

[www.cambridgeenglish.org/helpdesk](http://www.cambridgeenglish.org/helpdesk)



[www.cambridgeenglish.org/keyforschools](http://www.cambridgeenglish.org/keyforschools)



[facebook.com/CambridgeEnglish](https://facebook.com/CambridgeEnglish)



[twitter.com/CambridgeEng](https://twitter.com/CambridgeEng)



[youtube.com/CambridgeEnglishTV](https://youtube.com/CambridgeEnglishTV)

Cambridge English Language Assessment is part of the University of Cambridge. We develop and produce the most valuable range of qualifications for learners and teachers of English in the world. Over 5 million Cambridge English exams are taken each year in more than 130 countries. More than 20,000 universities, employers, government ministries and other organisations accept our certificates.

Cambridge English Language Assessment – a not-for-profit organisation.

All details are correct at the time of going to print in March 2015.



A DIVISION OF  
CAMBRIDGE ASSESSMENT